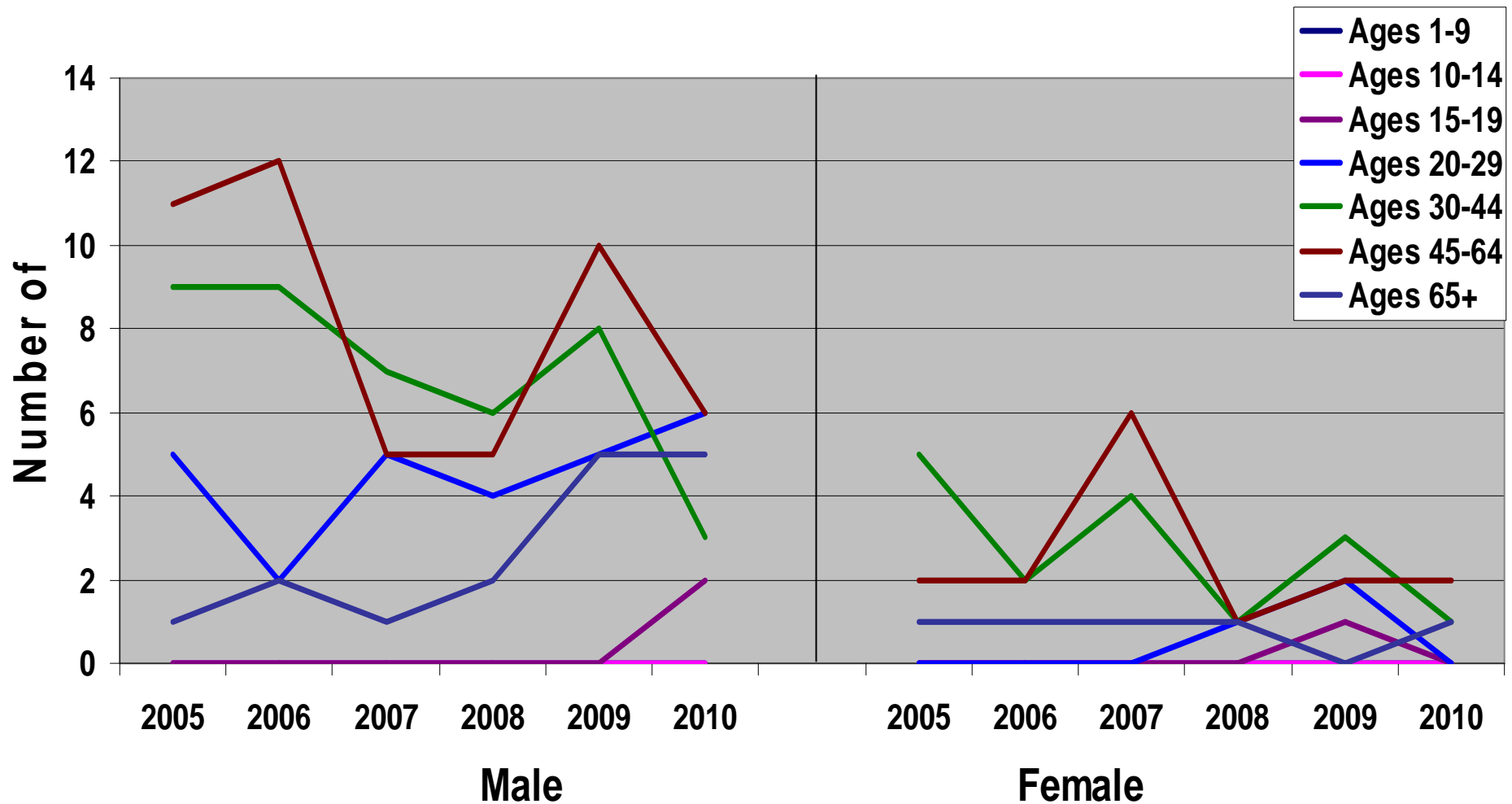


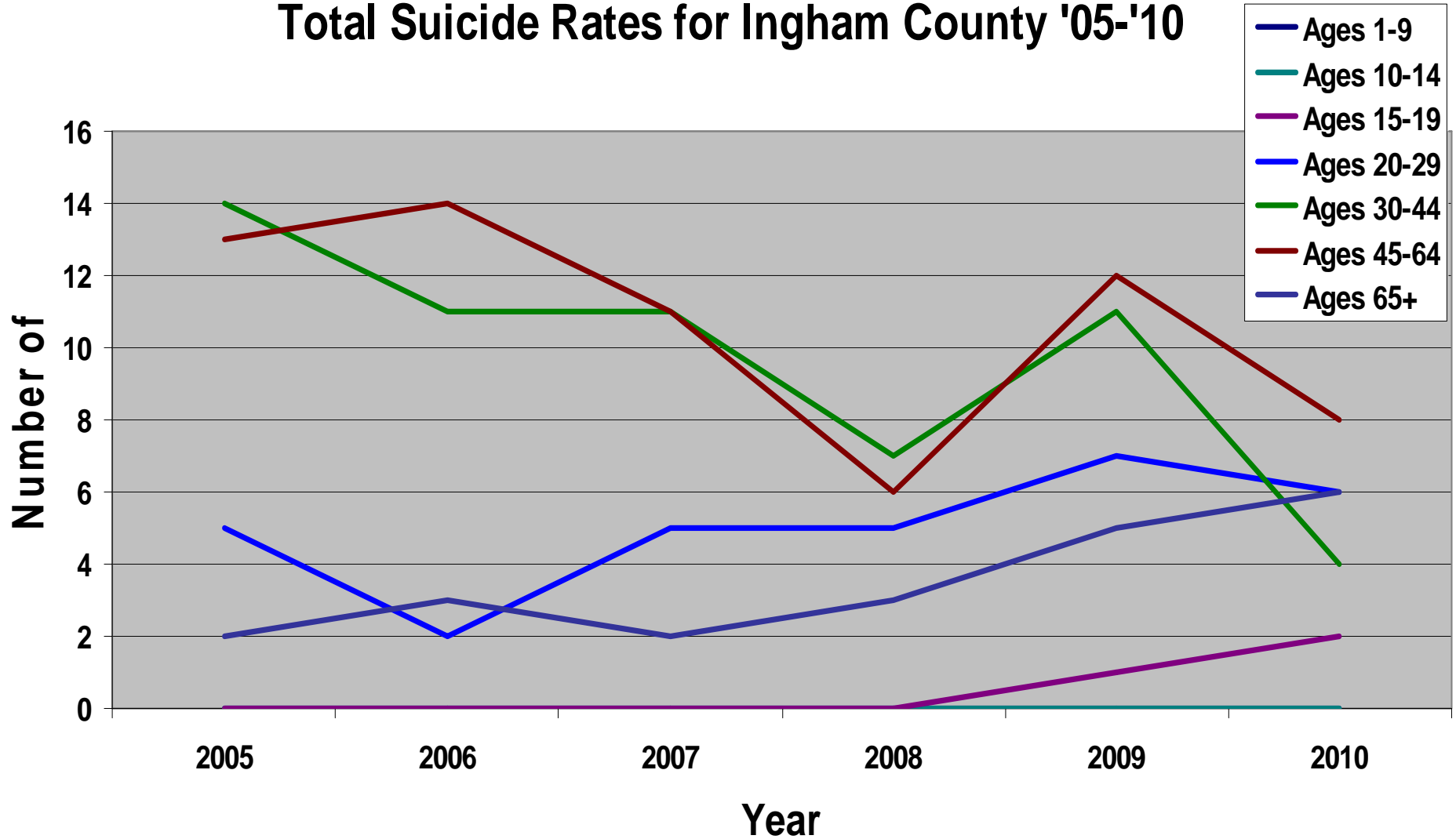
Suicide Rates by Gender

Suicide Rates for Ingham County '05-'10 by Gender



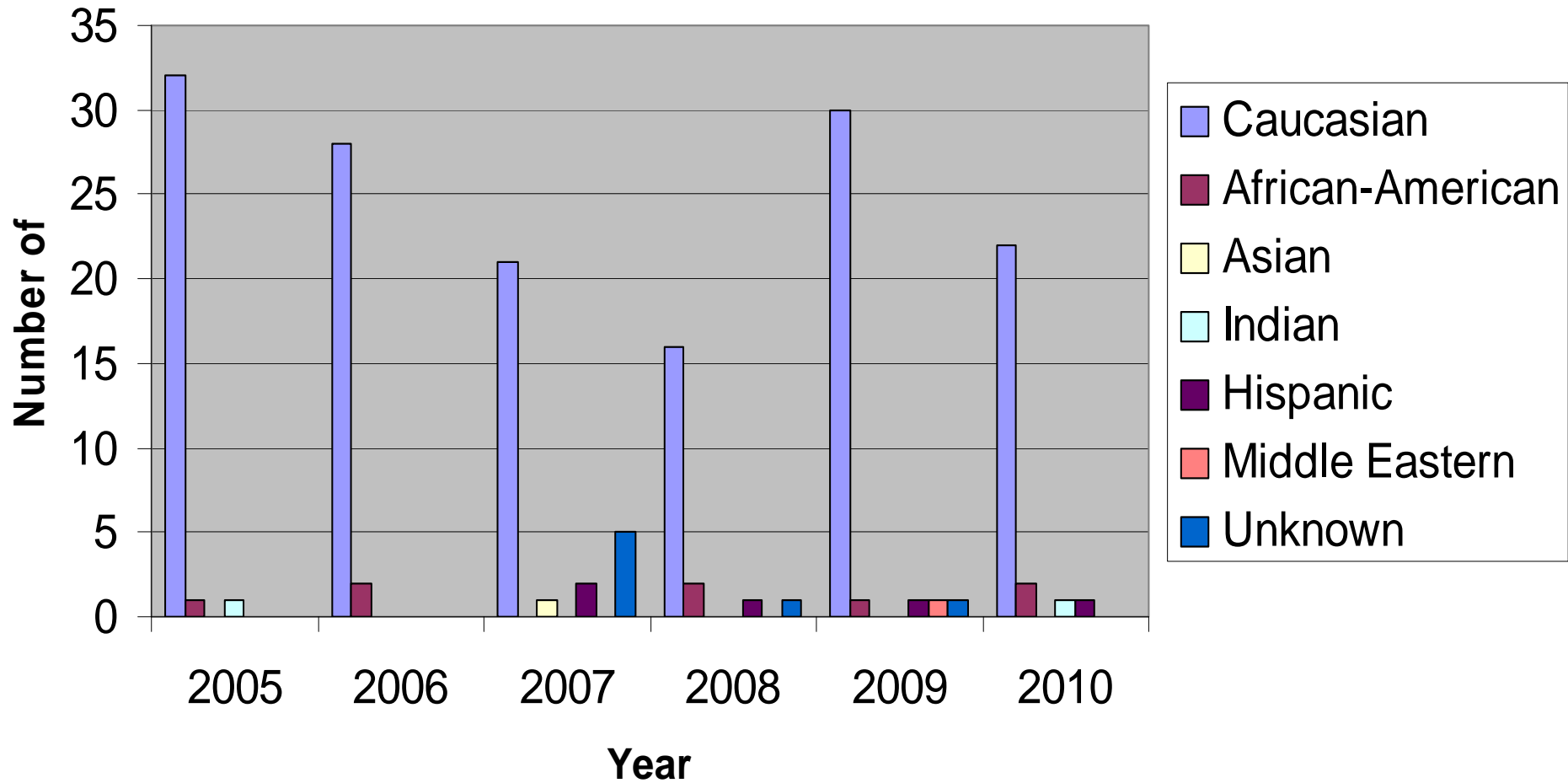
Total Suicide Rates

Total Suicide Rates for Ingham County '05-'10



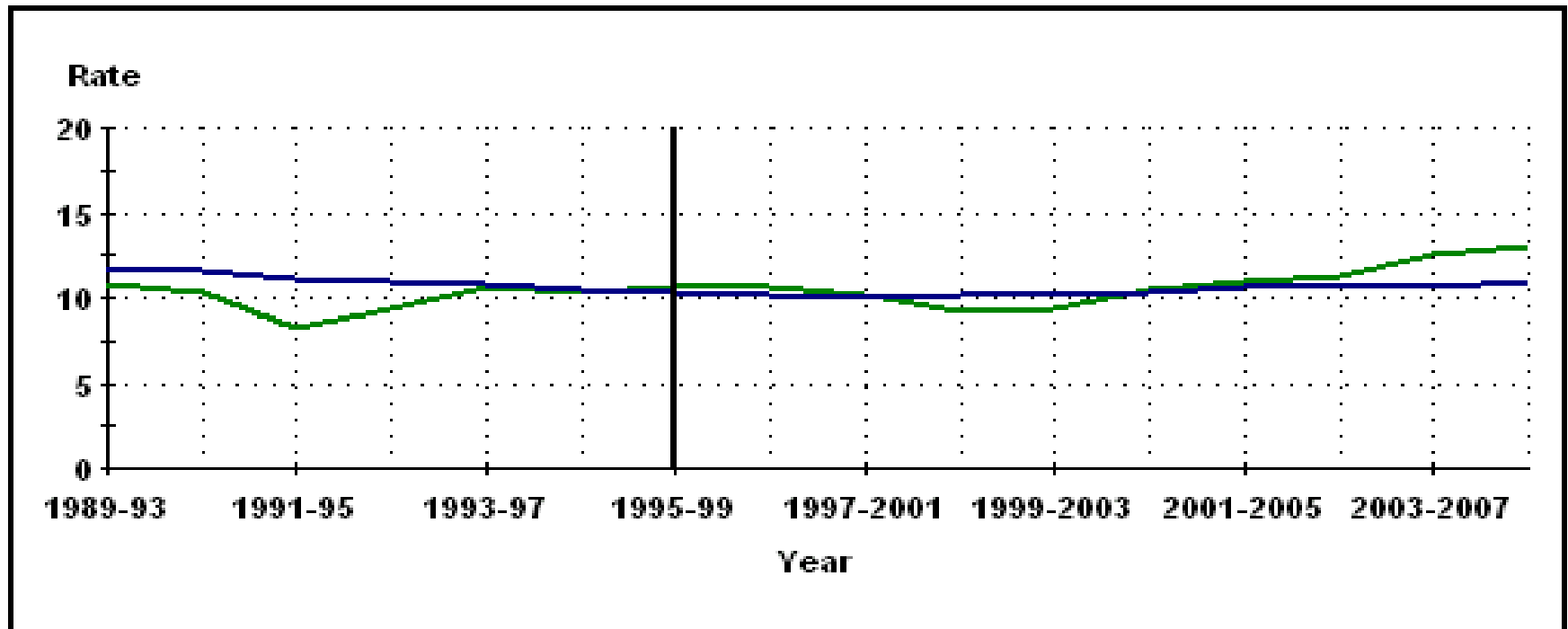
Suicides by Race

Suicides by Race in Ingham County '05-'10



Eaton County – higher than the state.

Suicide Age-adjusted Death Rates, Five-year Moving Averages Eaton County Residents, 1989-2008

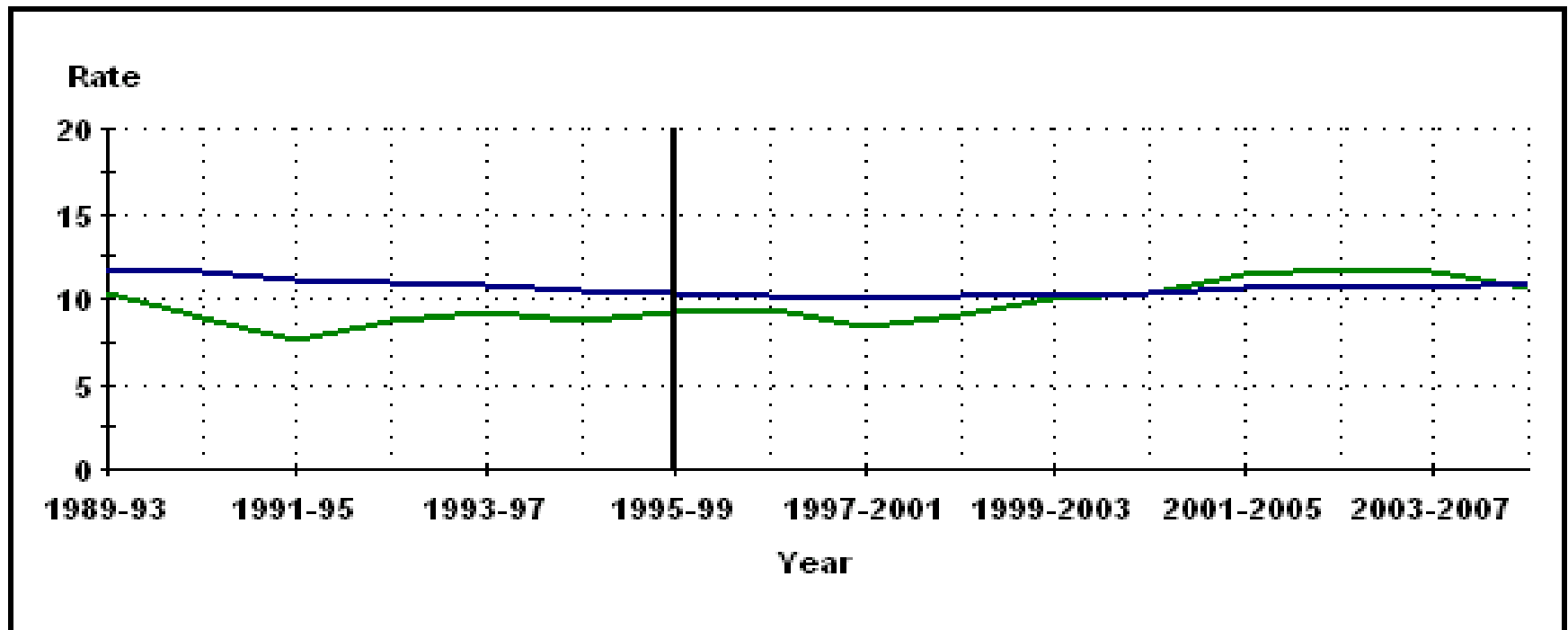


Source: 1989 - 2008 Michigan Resident Death Files,
Vital Records & Health Statistics Section,
Michigan Department of Community Health

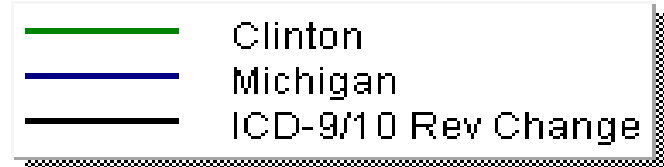


Clinton County – similar to the state

Suicide Age-adjusted Death Rates, Five-year Moving Averages Clinton County Residents, 1989-2008

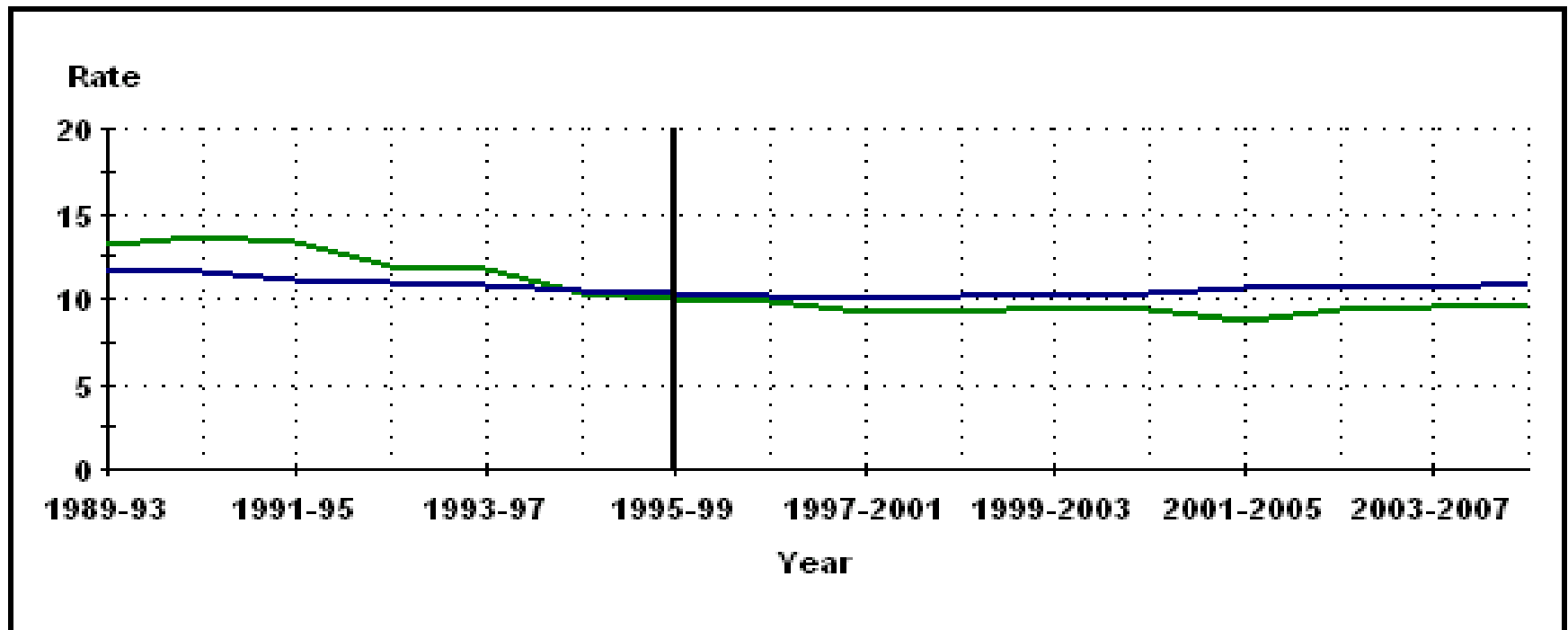


Source: 1989 - 2008 Michigan Resident Death Files,
Vital Records & Health Statistics Section,
Michigan Department of Community Health



Ingham County – lower than the state.

Suicide Age-adjusted Death Rates, Five-year Moving Averages Ingham County Residents, 1989-2008

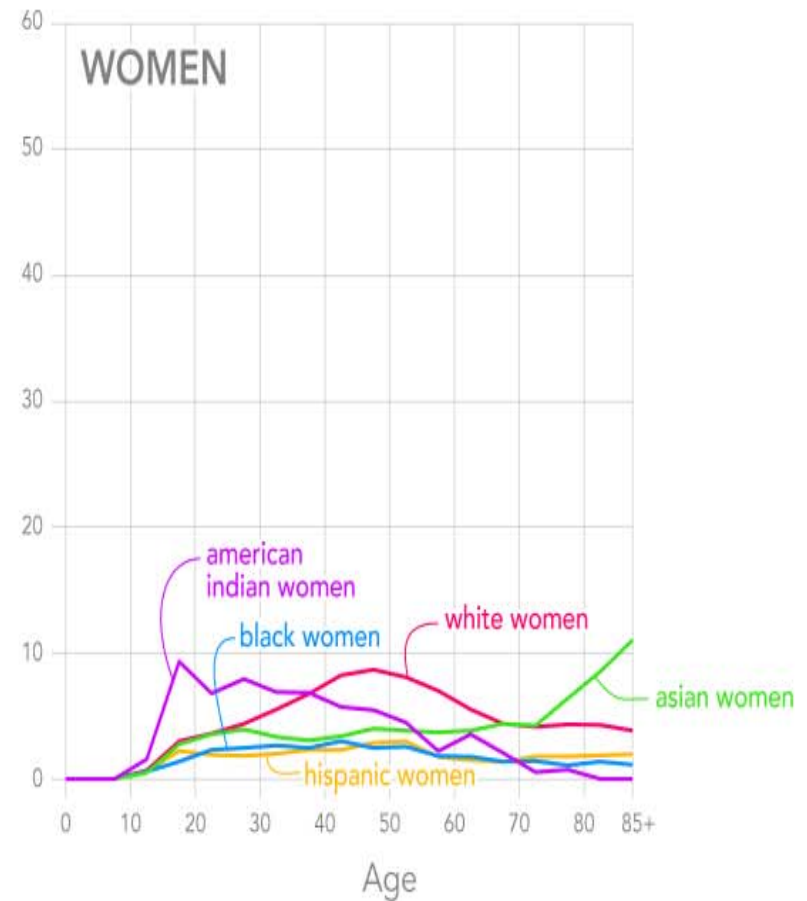
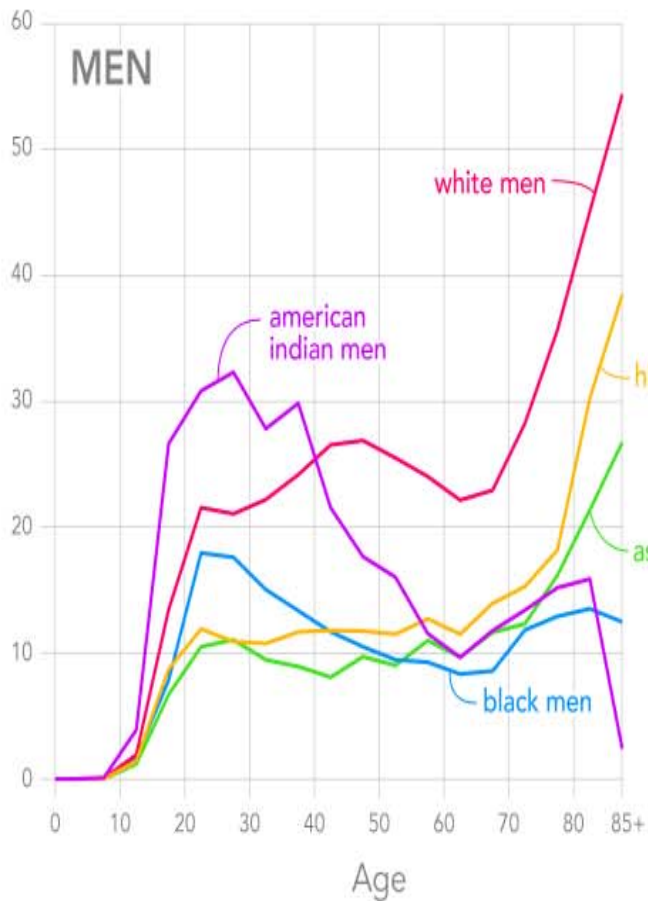


Source: 1989 - 2008 Michigan Resident Death Files,
Vital Records & Health Statistics Section,
Michigan Department of Community Health

— Ingham
— Michigan
— ICD-9/10 Rev Change

The rate of suicide varies depending on age, race, ethnicity, and gender.

Suicides per 100,000 living people United States, by Race, Ethnicity, Gender, and Age, 1999–2005



white, black, indian, and asian total 100%; hispanics may be of any race
data source: National Center for Health Statistics, CDC; hispanic data 1999–2003 only; death rates may not be statistically robust for older non-white groups

If a young person dies, it's far more likely to be due to suicide than other age groups, regardless of race or ethnic group.

Suicides as Percent of All Deaths

United States, by Race, Ethnicity, Gender, and Age, 1999–2005

